

Manchurian wildrice

Zizania latifolia

LIFE RIPARIAS alert list species



©Forest and Kim Starr (1)



Invasive species native to China.

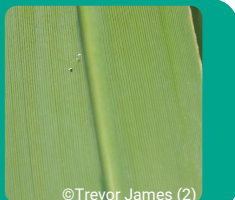
Uncommon in the wild in Belgium

Found in **shallow stagnant waters** (edge of water bodies, swamps...)



Aquatic or semi-aquatic emerged perennial plant. Can grow to heights of 4 m

Long, dull grey-green leaves with a stout midrib on the leaf underside



©Trevor James (2)

Rhizomatous plant forming dense long-lived stands. Does not produce flowers in Belgium



©Etienne Brangban

If you spot that species, record your observation on



Observations.be



iNaturalist

You will contribute to the protection of our ecosystems against invasive alien species



©anna_efimova (3)

Leaves up to 1 m long and 2 cm wide



©An Leyssen

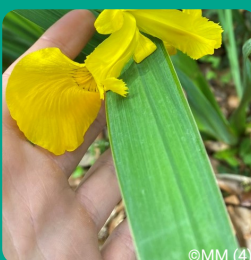
Smooth, shiny, hollow stem with flattened section



©Kevin Scheers

Black spots and large ligule at the base of the leaves

Not to be confused with



©MM (4)

Iris pseudacorus - Native

- Stem slightly compressed
- Yellow flowers (between April and July)
- Dark-green basal leaves (10 to 20 mm) with a raised midrib

***Typha* spp. - Native** Absence of midrib on the leaves. Flowering between June and August

Typha angustifolia

Leaves are 1cm wide



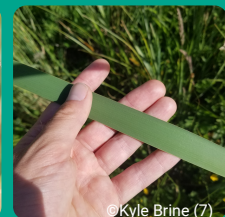
©Mike Patterson (5)

Typha latifolia

Leaves are 1 to 2cm wide



©Amadej Trnkoczy (6)



©Kyle Brine (7)

1: <https://tinyurl.com/ukknr7mm>
2: <https://www.weedbusters.org.nz/what-are-weeds/weed-list/manchurian-rice-grass/>
3: <https://www.inaturalist.org/observations/39883769>
4: <https://www.inaturalist.org/observations/72537953>
5: <https://www.inaturalist.org/observations/3930117>
6: <https://www.flickr.com/photos/atrnkoczy/3406470969>
7: <https://www.inaturalist.org/observations/49658876>



© LIFE RIPARIAS. Licence CC-BY-NC